



Preferred

成都普菲德生物技术有限公司  
Chengdu Pufei De Biotech Co., Ltd

MSDS of Osthole

## Material Safety Data Sheet

### 1. Chemical Identification

**Product Name:** Osthole

**CAS No. :** 484-12-8

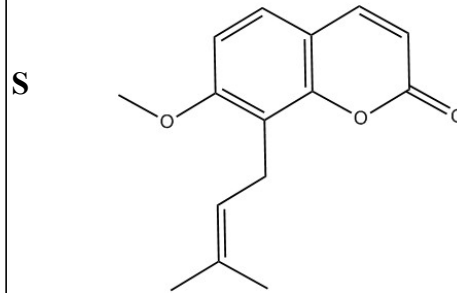
**Mol. Formula:** C<sub>15</sub>H<sub>16</sub>O<sub>3</sub>

**Mol. Weight:** 244.29

**Botanical Source:** Fructus Cnidii

**Company:** Chengdu Pufei De Biotech Co.,  
Ltd

structure:



### 2. Hazards identification

**CAUTION:** May be harmful to skin and eyes if swallowed, inhaled or absorbed through skin. The chemical, Physical and toxicological properties of this product have not been thoroughly investigated. Exercise due care.

### 3. First-aid measures

**If swallowed :** Give large quantities of water to drink and get medical attention immediately, never give anything by mouth to an unconscious person. Call a physician.

**If inhaled:** Remove to fresh air. If breathing becomes difficult, Call a physician .

**If Contact with eye :** Flush with copious amounts of water at least 15 minutes, Assure adequate Flushing by separating the eyelids with fingers. Call a physician.

### 5. Fire-fighting measures

**Extinguishing Media:**  
carbon dioxide, dry chemical power or appropriate form.

**Special fire-fighting procedures:**

Wear self-contained breathing apparatus and protective clothing to prevent with skin and



Preferred

成都普菲德生物技术有限公司

Chengdu Pufei De Biotech Co., Ltd

MSDS of Osthole

eyes. Full turnout gear.

Unusual fire and explosions hazard:

Not considered to be a fire hazard nor an explosions hazard.

## 6、Accidental release measures

Wear respirator, chemical safety goggles, rubber boots and heavy rubber gloves.

Sweep up, place in a bag and hold for waste disposal.

Avoid raising dust. Pickup and place in a suitable container for disposal in a method that does not generate dust.

Ventilate area and wash spill site after material pickup is complete.

## 7、Handing and storage

Store in a cool (0-10°C) and desiccated environment and protected from light.

Containers of this material may be hazardous when empty since they retain product residues (dust, solids); observe all warnings and precautions listed for the product.

## 8、Exposure controls/personal protection

NIOSH/MSHA-approved respirator.

Mechanical exhaust.

Compatible chemical-resistant gloves.

Chemical safety goggles.

## 9、Physical and chemical properties

Physical state :White powder

Color : White powder

Molecular Weight :244.29

Solubility:Chloroform, methanol, ethanol

## 10、Stability and reactivity

Stability:

They all stable under ordinary conditions of use and storage.

Hazardous combustion or decomposition products:

Not yet available.

Hazardous Polymerization:



*Preferred*

成都普菲德生物技术有限公司

Chengdu Pufei De Biotech Co., Ltd

MSDS of Osthole

Not yet available.

### 11、 Toxicological information

Skin irritation:	Not available.
Acute toxicity:	Not available.
Carcinogenic effects:	Not available.
Mutagenic effects:	Not available.
Reproduction effects:	Not available.
Teratogenic effects:	Not available.

### 12、 Ecological information

Ecotoxicity: Not available

### 13、 Disposal considerations

Dissolve or mix the material with a combustible solvent and burn in a chemical incinerator equipped with an afterburner and scrubber. Observe all Federal, State and Local Environmental Regulations.

### 14、 Transport information

FEDEX

### 15、 Regulatory information

Data is not available.

### 16、 Other information

#### DISCLAIMER

For R&D use only. Not for drug, household or other uses.

#### WARRANTY

The information presented herein is believed to be accurate and representative of currently accepted technical literature. However, Chengdu Pufei De Biotech Co., Ltd does not mean to imply its completeness or comprehensiveness. Therefore, we suggest the use of this information solely as a guide in the use and handling of this product, and further urge the user to determine the suitability of this material for any particular purpose. Chengdu Pufei De Biotech Co., Ltd shall not be held liable for any damages resulting from sole reliance on this information.